

Helpman LEX 4-7-RI-E-/spec

Specifications

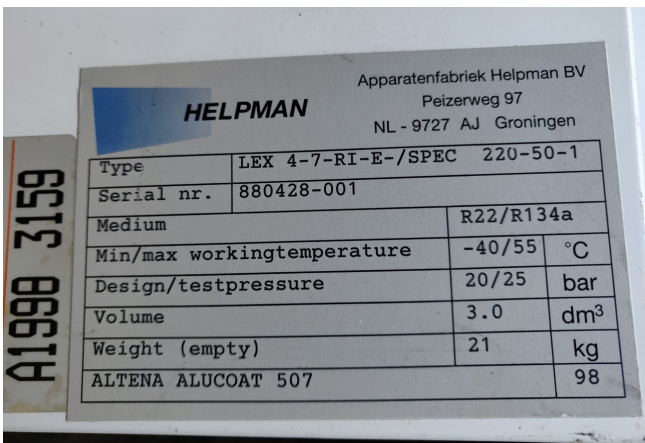
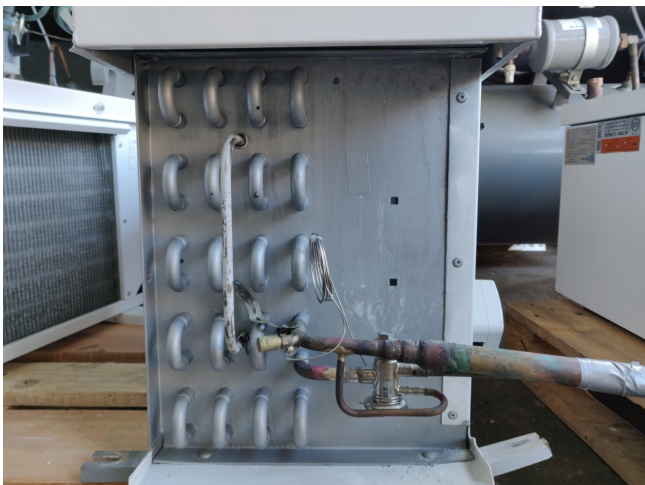
Brand	Helpman
Type	LEX 4-7-RI-E-/spec
kW	1.7
Refrigerant	Freon
Number of Fans	1
Fin Space in mm	7
Defrosting	Electric
m ³ /h	1570
Sizes	658x640x430mm (LxWxH)
Volume	3dm ³
Weight	21kg
Stock	1



Description

Used Helpman LEX 4-7-RI-E-/spec

Used blow-through Helpman Lex 4-7-RI-E-/SPEC evaporator with electric defrost and 1 missing fan (can be mounted again) diameter 300 mm, 1.570 m³/h, 21kg, 3dm³. "*Why choose for HOSBV? We're not only the largest used refrigeration specialist in Europe, but also, we deliver all equipment including an extensive test, warranty and industrial cleaning. Optional we can arrange shipment and export documents."



nominal capacities (kW)

Cooler type	R 22 frosted DT ₁	R 134a frosted DT ₁	R 404A frosted DT ₁	For reference only dry conditions DT ₁		
				R 22	R 134a	R 404A
Fin spacing 4 mm						
LEX 2 - 4	1.5	1.3	1.5	1.3	1.1	1.3
LEX 4 - 4	1.9	1.5	1.8	1.7	1.3	1.6
LEX 6 - 4	2.8	2.4	2.8	2.4	2.1	2.5
LEX 8 - 4	4.7	4.1	4.7	4.1	3.5	4.1
LEX 10 - 4	4.7	4.4	4.8	4.1	3.8	4.2
LEX 12 - 4	5.9	5.6	6.2	5.1	4.9	5.4
LEX 14 - 4	6.5	6.4	7.1	5.7	5.6	6.2
LEX 16 - 4	8.7	8.4	9.3	7.5	7.3	8.1
LEX 18 - 4	9.7	8.7	9.8	8.5	7.6	8.6
LEX 20 - 4	12.8	10.8	12.7	11.2	9.4	11.0
LEX 22 - 4	16.1	13.0	15.4	14.0	11.3	13.4
LEX 24 - 4	20.0	16.1	19.2	17.4	14.0	16.7
LEX 26 - 4	26.0	23.0	26.0	22.6	20.0	22.6
LEX 28 - 4	32.8	29.0	33.2	28.5	25.2	28.9
LEX 30 - 4	40.3	32.5	38.5	35.0	28.3	33.4
Fin spacing 7 mm						
LEX 2 - 7	1.3	1.2	1.3	1.1	1.0	1.2
LEX 4 - 7	1.7	1.4	1.7	1.5	1.2	1.4
LEX 6 - 7	2.5	2.2	2.5	2.2	1.9	2.2
LEX 8 - 7	4.1	3.7	4.3	3.6	3.3	3.7
LEX 10 - 7	3.7	3.6	4.0	3.2	3.2	3.5
LEX 12 - 7	5.0	4.9	5.3	4.4	4.3	4.6
LEX 14 - 7	5.5	5.5	6.0	4.8	4.8	5.2
LEX 16 - 7	7.4	7.3	8.0	6.4	6.3	7.0
LEX 18 - 7	8.5	7.8	8.8	7.4	6.8	7.6
LEX 20 - 7	11.4	10.0	11.4	9.9	8.7	9.9
LEX 22 - 7	14.5	12.4	14.3	12.6	10.7	12.4
LEX 24 - 7	18.1	15.6	17.8	15.7	13.5	15.5
LEX 26 - 7	22.8	21.2	23.4	19.8	18.4	20.4
LEX 28 - 7	28.5	26.5	29.3	24.8	23.0	25.5
LEX 30 - 7	36.5	31.0	35.9	31.7	27.0	31.2